

Crisis situations of women during martial law

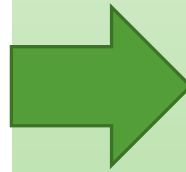
BEREST M.M.

PHD, ASS.PROF OF FINANCE DEP.

KHNUE NAMED S. KUZNETS

Content and symptoms of a crisis state of personality

Crisis is a disturbance in the functioning of the personality, embodied by a feeling of subjective distress, which arises in response to difficult circumstances and is characterized by a high level of neuropsychological tension.



*Symptoms of a personality crisis:
decrease in the level of behavioral adaptability;
drop in self-esteem;
primitivization of self-regulation.*

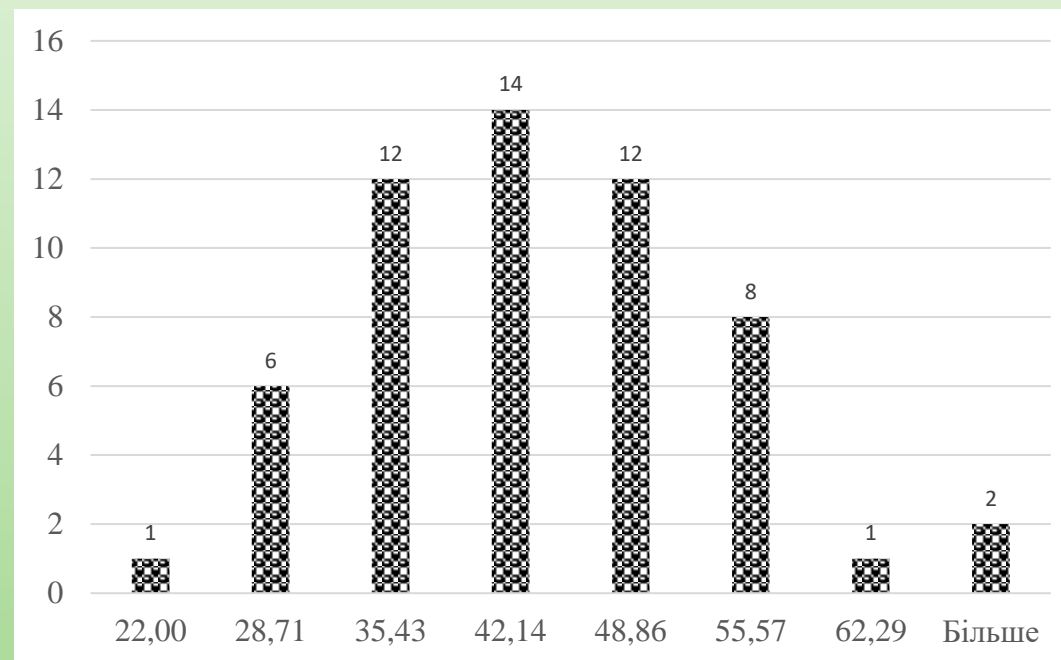
Analysis of research results by psychodiagnostic methods

The research sample consisted of 56 women, aged 22 to 69, living in Ukraine until February 24, 2022.

Sample structure:

- women aged 21 to 30 – 10 people (17.86%);
- from 31 to 40 years old – 19 people (33.93%);
- from 41 to 50 years old – 21 people (37.5%);
- from 51 to 60 years old - 4 people (7.14%);
- over 60 years old - 2 persons (3,57%).

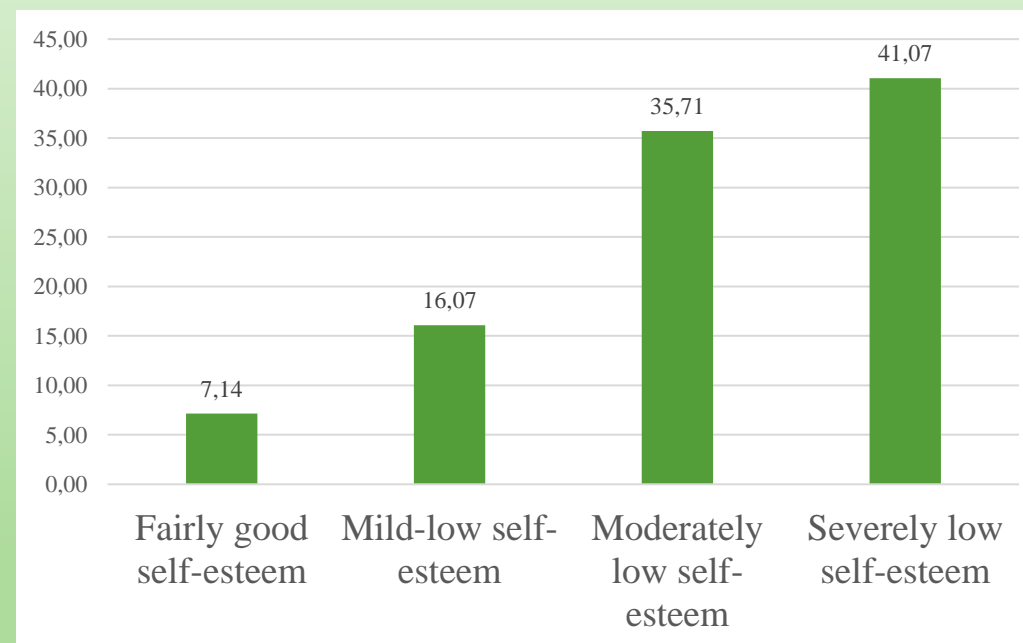
Histogram of frequency distribution in the sample



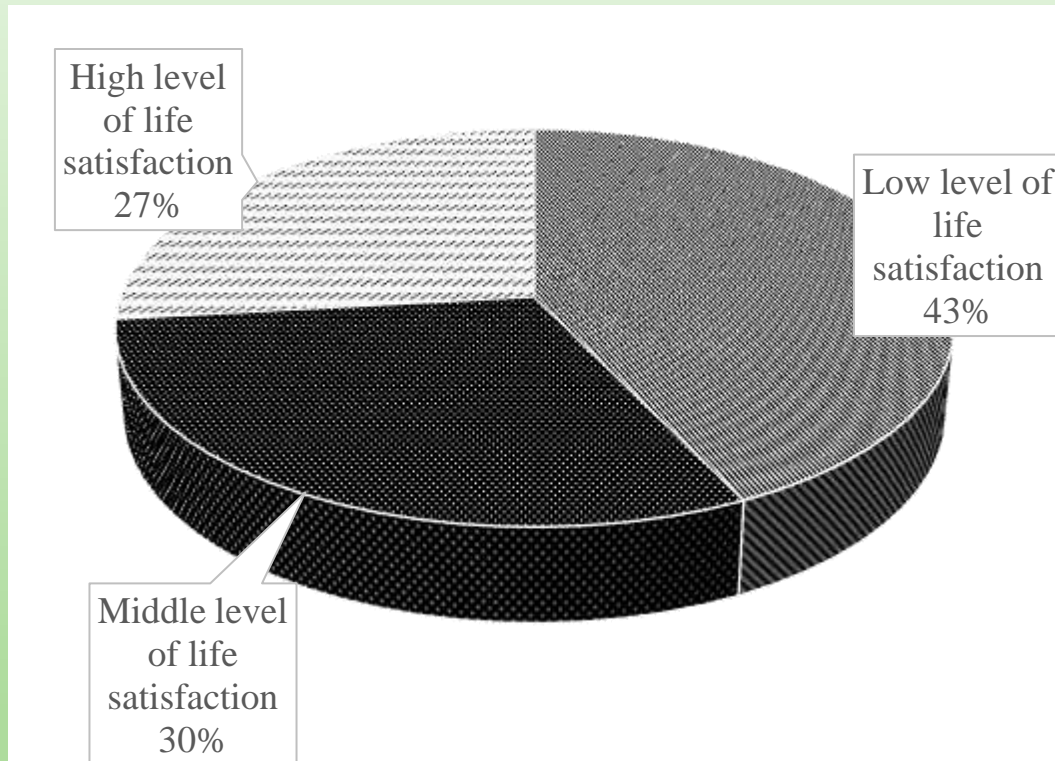
Distribution of the level of self-esteem of women according to the results of the M. Sorensen test

No	The level of self-esteem	Number of people	Percentage, %
1	Fairly good self-esteem	4	7,14
2	Mild-low self-esteem	9	16,07
3	Moderately low self-esteem	20	35,71
4	Severely low self-esteem	23	41,07
5	Total	56	100

Percentage of women by level of self-esteem



Percentage of women by level of life satisfaction



Average indicators of life satisfaction assessment scales by age groups

Age group	Life satisfaction index					
	Interest in life	Consistency in achieving goals	Consistency between set and achieved goals	A positive assessment of oneself and one's own actions	General mood background	LSIA
21 – 30	3,7	5,8	3,3	6	3,9	22,7
31 – 40	3,95	5,79	5,00	5,74	4,95	25,42
41 – 50	4,48	6,14	5,48	6,10	5,10	27,29
51 – 60	4,25	5,25	5,00	6,00	3,75	24,25
more than 60 years	6,00	6,00	3,50	6,50	4,00	26,00
Total	4,20	5,89	4,82	5,96	4,70	25,57

Average indicators of life awareness assessment scales by age groups

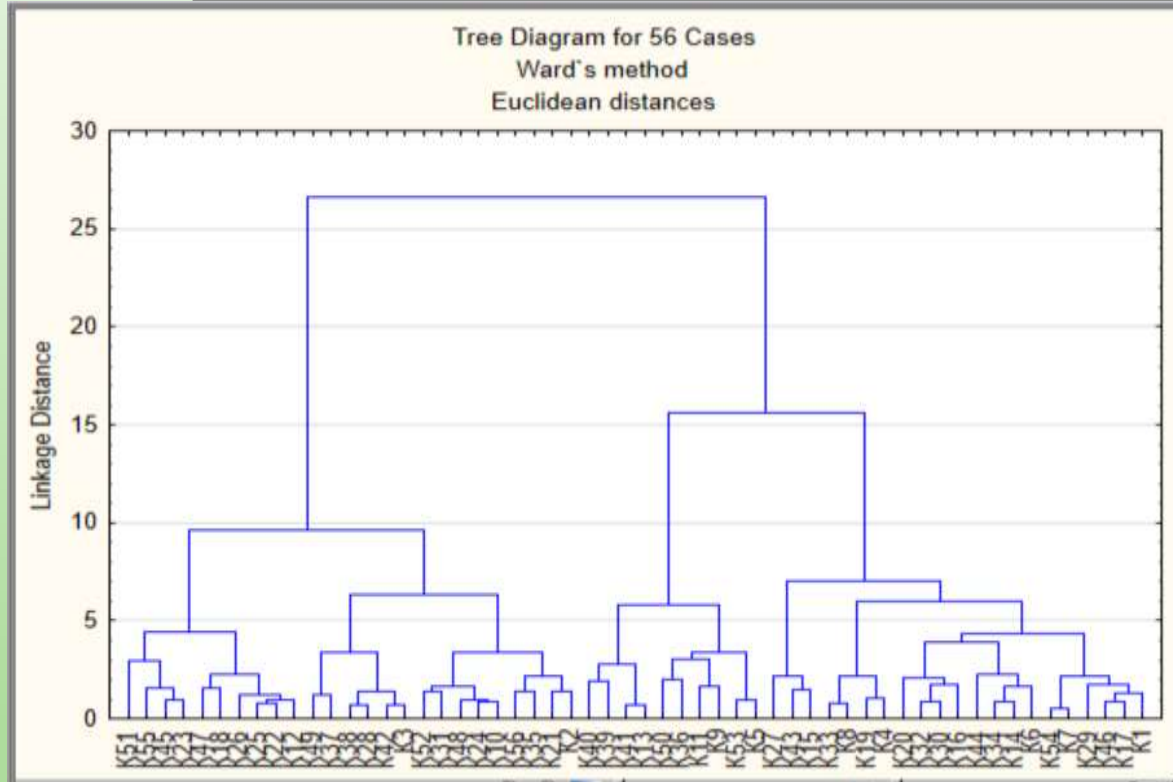
Assessment and level of depth of life changes in women under marital law

Age group	Areas of assessment of life awareness (LA)					
	Goals	Process	Result	Locus of control "Me"	Locus of control "Life"	The general indicator of LA
21 – 30	25,9	24	21,8	19,1	27,4	88
31 – 40	31,21	28,37	25,32	20,47	30,89	101,32
41 – 50	31,52	28,10	25,05	19,57	30,62	99,81
51 – 60	32,25	29,5	26,75	21,25	28,75	102,75
more than 60 years	28,5	28,5	22,5	18	26	93
Total	30,36	27,57	24,59	19,86	29,84	98,18
Max point	42	42	35	28	42	140

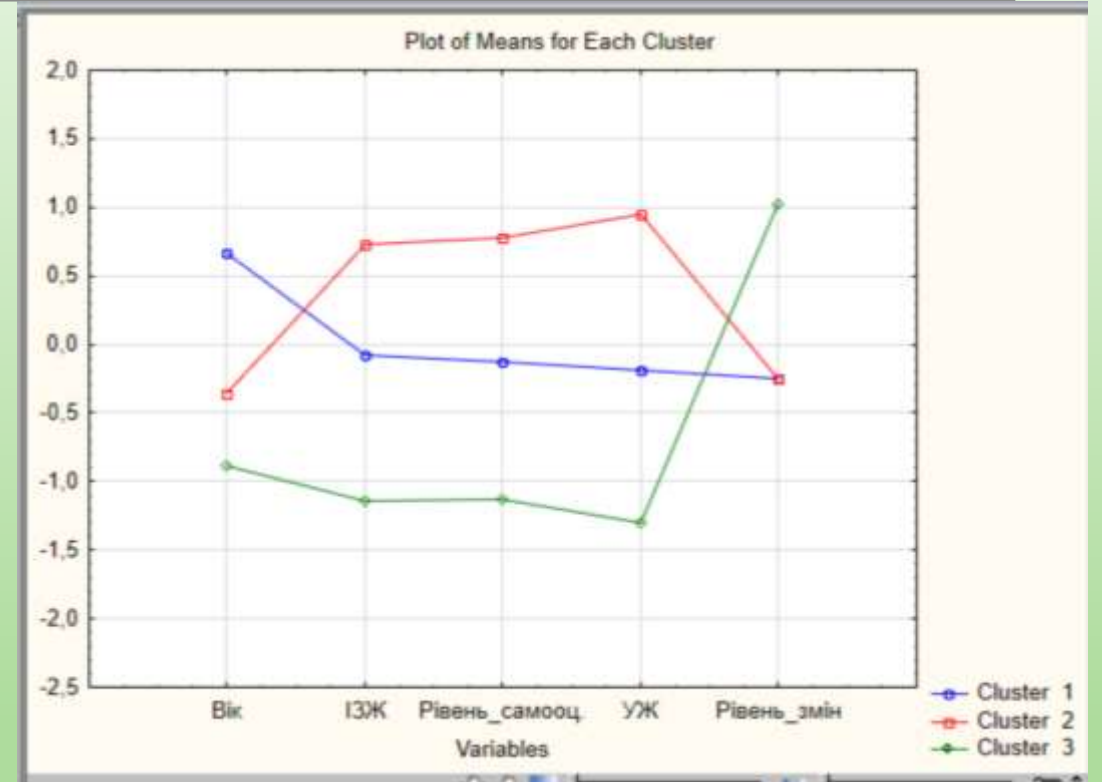
№	Gradation of points based on the results of the survey	The level of change in women's lives	Number of people	Percentage
1	0 -4	Low	19	33,93
2	5 – 9	Middle	31	55,36
3	10 - 14	High	6	10,71
4		Total	56	100,00

Diagnosis and grouping of women according to the level of psycho-emotional states by the cluster analysis

Vertical icicle plot



Graf of means



Results of a cluster analysis of a sample of interviewed women under martial law

Cluster number	Ciphers of respondents included in the cluster	Characteristics of the cluster
Cluster 1, number of objects 25	K1, K4, K6, K7, K8, K12, K14, K16, K17, K19, K20, K23, K27, K29, K30, K32, K33, K34, K43, K44, K45, K46, K51, K54, K55	The oldest age group, satisfaction with life, self-esteem, awareness of life is at an average level. The depth of changes under martial law is also estimated at an average level.
Cluster 2, number of objects 20	K2, K3, K10, K18, K21, K22, K24, K25, K26, K28, K31, K35, K37, K38, K42, K47, K48, K49, K52, K56	The average age group, level of life satisfaction, self-esteem, awareness of life are rated as the highest within the studied sample. The depth of changes under martial law is estimated at an average level.
Cluster 3, number of objects 11	K5, K9, K11, K13, K15, K36, K39, K40, K41, K50, K53,	The youngest age group, however, the level of life satisfaction, self-esteem, awareness of life is rated as the lowest within the studied sample. The depth of changes in the conditions of martial law is assessed as significant.

Analysis of variance

Variable	Analysis of Variance (Spreadsheet2 in Workbook106)					
	Between SS	df	Within SS	df	F	signif. p
Вік	22,46894	2	32,53106	53	18,30334	0,000001
ІЗЖ	25,22944	2	29,77056	53	22,45777	0,000000
Рівень_самооц.	26,65603	2	28,34397	53	24,92188	0,000000
УЖ	37,38205	2	17,61795	53	56,22810	0,000000
Рівень_змін	14,31252	2	40,68748	53	9,32183	0,000340

Thank you for your attention!

