



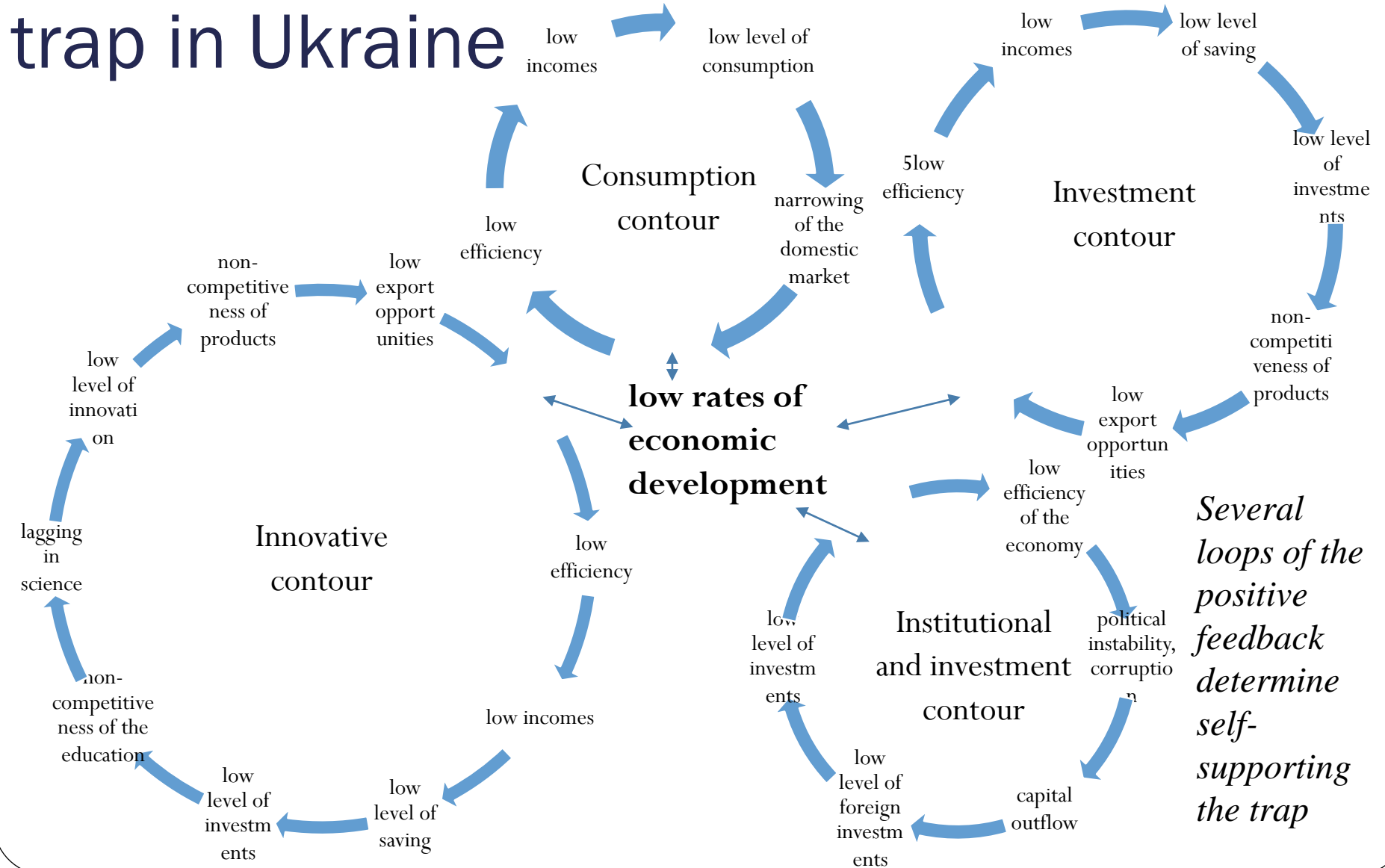
# The backwardness trap in Ukraine under economic cycles

**Olha Poliakova**

Head of the Section of macroeconomic  
analysis and forecasting

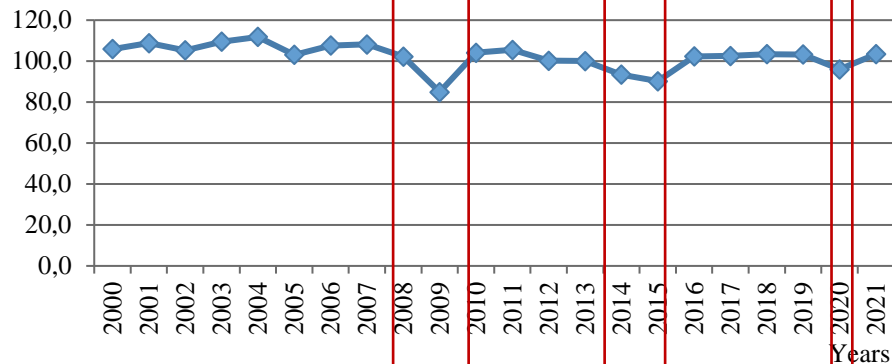
Research Center for Industrial Problems of  
Development of the National Academy of  
Sciences of Ukraine

# Forming the backwardness trap in Ukraine

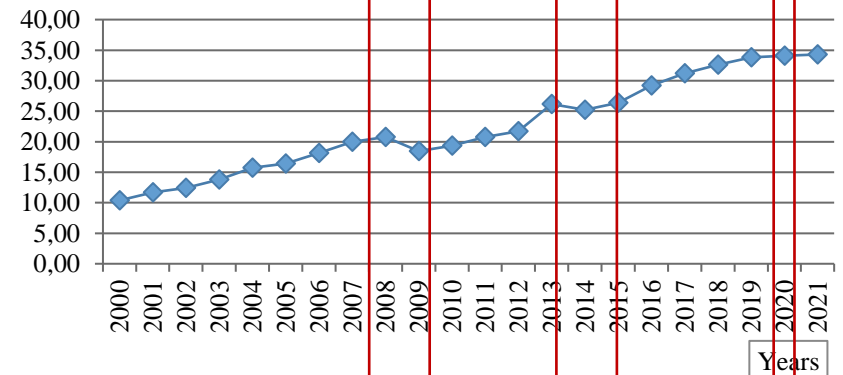


# Real sector of Ukrainian economy

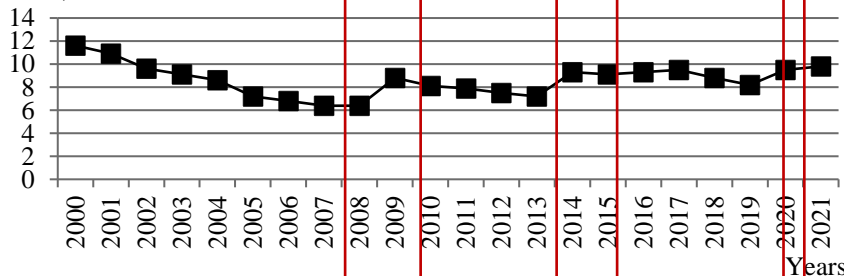
Volume indices of GDP, %



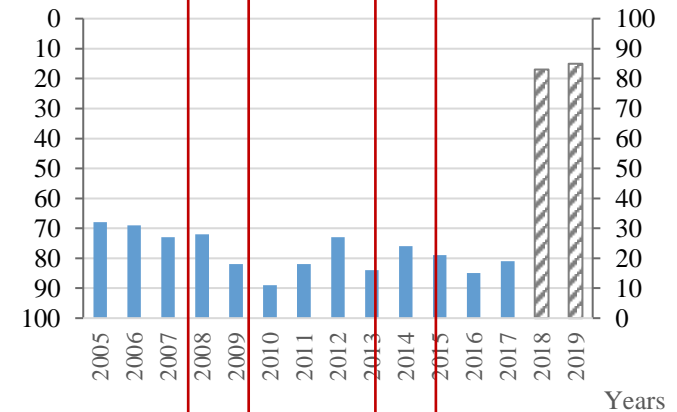
Labor Productivity, k\$ PPP



Unemployment rate, %

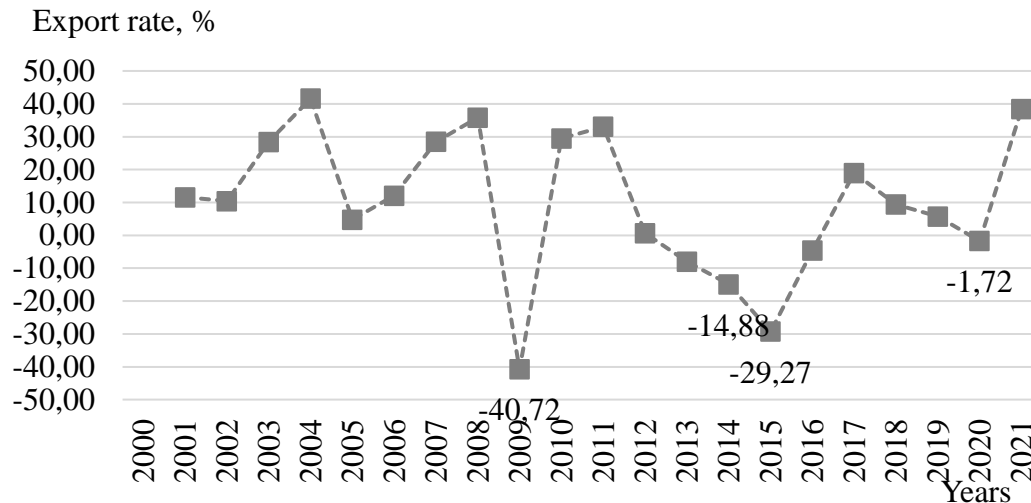


GCI



On the eve of 2022, the real sector did not allow to search ways or implement any measures to get out of the trap of backwardness

# Export

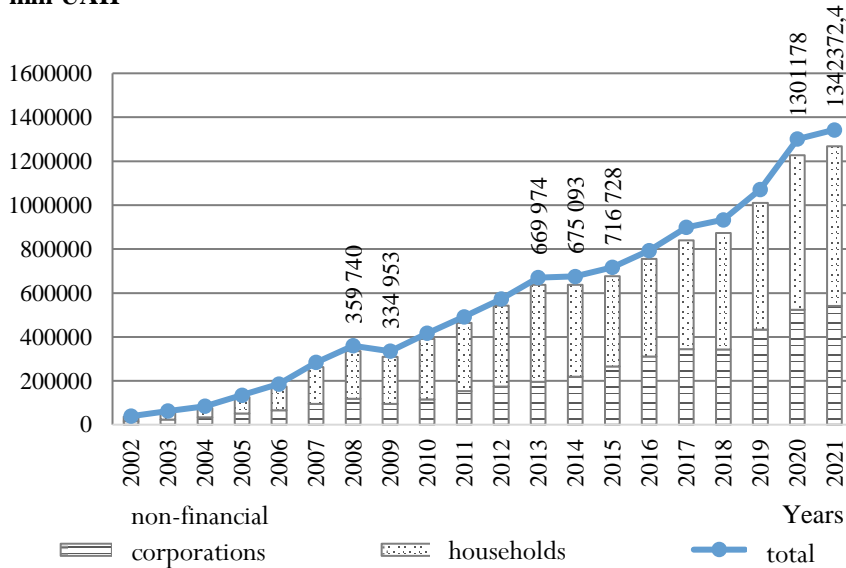


The raw material orientation of Ukrainian exports, together with the foreign trade imbalance in the industries of the largest export, led to a lack of incentives for technological renewal and innovative development in the real sector and deepening the backwardness trap at crisis years.

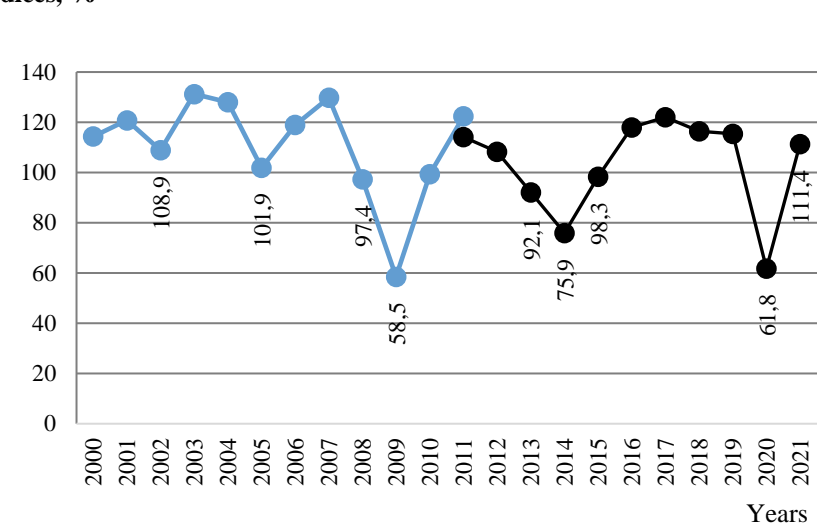
Industries	Trade openness (2021)
Agriculture, forestry, fishing	28,5
Extraction of non-energy minerals	50,3
Manufacture of food products	20,8
Manufacture of chemicals	24,7
Manufacture of basic pharmaceutical products)	7,1
Manufacture of basic metals and metal products	53,9
Manufacture of computer, electronic and optical products	13
Manufacture of electrical equipment	37,5
Manufacture of machinery and equipment n.e.c.)	45,4
Manufacture of motor vehicles	11,4
Manufacture of other transport equipment	19,3

# Saving and investment

**Deposits, mln UAH**



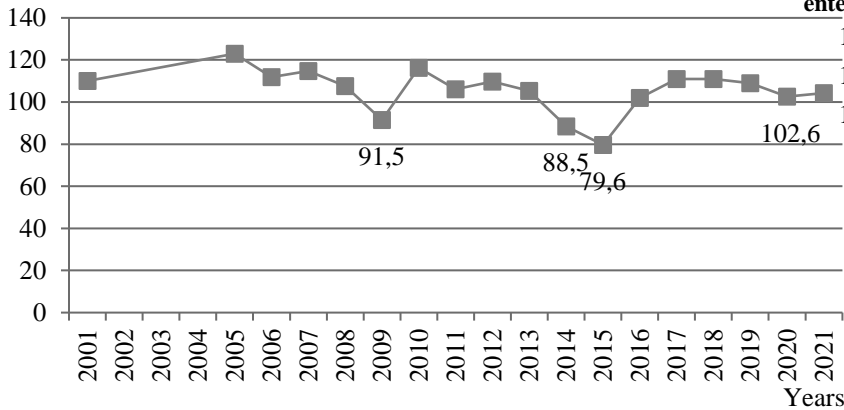
**Investment indices, %**



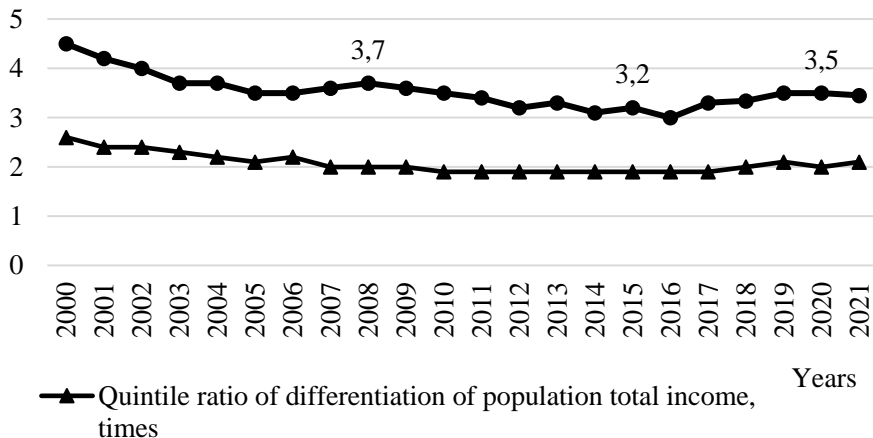
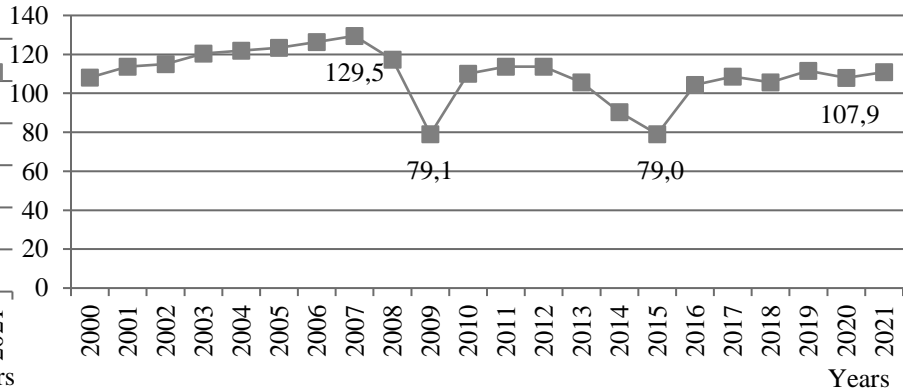
The negative investment trends in the economy are caused by the lack of own and borrowed funds for development

# Consumption

Real disposable income per 1 person, uah



Volume indices of retail turnover of retail enterprises, %



The disproportionality and heterogeneity of economic development leads to the heterogeneity of population employment, the emergence of large differences and gaps by income and social groups.. A poverty trap is formed inside the backwardness trap, which deepens it.



# Thank you!



Olha Poliakova

[polya.o70@gmail.com](mailto:polya.o70@gmail.com)

ORCID: [0000-0001-8207-3198](https://orcid.org/0000-0001-8207-3198)